



2010 Turkiye Ranking Masters - Kisa Yaglama

Oil Per Board: 50 uL Oil Pattern Distance: 35 Feet Volume Oil Total: 21 mL Total Boards Crossed: 420 Boards

Forward Oil Total: 9.5 mL Reverse Oil Total: 11.5 mL
 Forward Boards Crossed: 190 Boards Reverse Boards Crossed: 230 Boards

Notes

	Start	Stop	Loads	Speed	Crossed	Start	End	Feet	T.Oil
1	2L	2R	1	14	37	0.0	0.0	0.0	1850
2	4L	4R	1	18	33	0.0	2.5	2.5	1650
3	5L	5R	2	18	62	2.5	7.6	5.1	3100
4	6L	6R	2	22	58	7.6	13.8	6.2	2900
5	2L	2R	0	22	0	13.8	24.0	10.2	0
6	2L	2R	0	26	0	24.0	35.0	11.0	0

	Start	Stop	Loads	Speed	Crossed	Start	End	Feet	T.Oil
1	2L	2R	0	30	0	35.0	28.0	-7.0	0
2	8L	8R	2	22	50	28.0	21.8	-6.2	2500
3	7L	7R	2	18	54	21.8	16.7	-5.1	2700
4	6L	6R	2	18	58	16.7	11.6	-5.1	2900
5	5L	5R	1	14	31	11.6	9.7	-1.9	1550
6	2L	2R	1	14	37	9.7	7.8	-1.9	1850
7	2L	2R	0	14	0	7.8	0.0	-7.8	0

Conditioner:
Type In or Select One

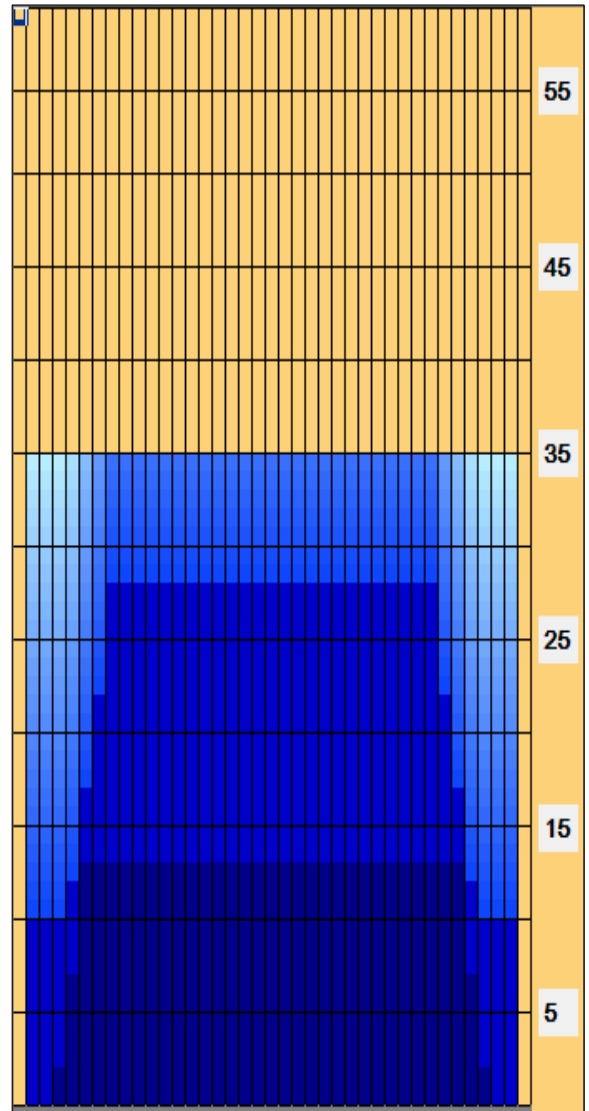
TransferType:
Type In or Select One

Forward

Reverse

Combined

Buff



Arrow Zone Ratios

Item	2-5L:16L-20	6-10L:16-20	11-15L:16L-20	16L-20:20-16R	16L-20:20-16R	20-16R:15-11R	20-16R:10-6R	20-16R:5-2R
ul Arrow	162.5	640	700	700	700	700	640	162.5
Zone Ratio	4.31	1.09	1	1	1	1	1.09	4.31

Track Zone Ratios

Item	3L-7L:18L-18R	8L-12L:18L-18R	13L-17L:18L-18R	18L-18R:17R-13R	18L-18R:12R-8R	18L-18R:7R-3R
Description	Outside Track:Middle	Middle Track:Middle	Inside Track:Middle	Middle: Inside Track	Middle:Middle Track	Middle:Outside Track
Track Zone Ratio	2.12	1	1	1	1	2.12

